

Addendum 1

New York State Board of Law Examiners Sample: Candidates with Valid LSAT Scores LSAT Score Analysis

This addendum includes all valid Law School Admission Test (LSAT) scores for domestic-educated candidates. The results below provide a view of domestic-educated candidate LSAT performance for all available LSAT scores from all available law schools in the New York State Board of Law Examiners sample (analogous tables and figures for the school-based sample are contained in section 3.2 and 3.5 of the primary report; Appendix F also contains analysis of all valid LSAT scores, portions of which are repeated below). Figures below include a horizontal line indicating a Multistate Bar Examination (MBE) score of 133, which is analogous to the 266 passing score in New York but rescaled to an MBE score. This horizontal line can be used to gauge where candidate MBE scores tend to fall relative to an MBE score of 133 at different levels of LSAT scores.

Patterns of performance comparing LSAT ranges against MBE scores were similar to patterns in performance comparing LSAT ranges against bar exam scores (and pass rates) in the main report, particularly for July exams.¹ As LSAT scores increased, MBE scores increased.² Also, MBE scores tended to be higher for candidates across years, such that 2017 MBE scores at a particular LSAT score range tended to be higher than 2016, which were higher than 2015. These patterns are consistent with results in the main report, where such patterns are discussed in more detail. That differences remain in MBE scores across years after accounting for LSAT score range indicates that LSAT by itself does not entirely explain improvements in MBE performance across years (i.e., before and after UBE adoption).

¹ Differences across February 2016 and February 2017 were larger than those observed in the main report, likely due to issues with the February sample that were described throughout the main report; although this pattern was also reported in Appendix F of the main report.

² There were instances where the number of candidates included in the groupings of LSAT scores was small and led to an observed decrease in means. Few candidates in the groups used to calculate means was likely to lead to unstable estimates and says more about the specific, few, candidates included in the group than about a group of candidates with a particular range of LSAT scores. Caution is warranted when interpreting the groups with small sample sizes.

Table AD1.1
LSAT Means and Standard Deviations
New York State Board of Law Examiners Sample
Domestic-Educated Candidates with Valid LSAT Scores

| | | February 2016 | February 2017 | July 2015 | July 2016 | July 2017 |
|--------------------------|-------------------------|------------------|------------------|-----------|-----------|-----------|
| LSAT (SEM 0.1 to 0.3) | Mean | 152.80 | 153.84 | 159.54 | 159.43 | 160.23 |
| | (SD) | (7.38) | (7.93) | (9.06) | (8.63) | (8.99) |
| | Correlation with MBE | .29 | .42 | .65 | .58 | .60 |
| | N | 716 | 1549 | 2485 | 5322 | 4597 |

Table AD1.2
LSAT Means and Standard Deviations
First-Time Taker New York State Board of Law Examiners Sample
Domestic-Educated Candidates with Valid LSAT Scores

| | | February 2016 | February 2017 | July 2015 | July 2016 | July 2017 |
|--------------------------|-------------------------|------------------|------------------|--------------|--------------|--------------|
| LSAT (SEM 0.1 to 0.7) | Mean | 153.16 | 156.61 | 160.55 | 160.30 | 161.45 |
| | (SD) | (7.56) | (8.57) | (8.75) | (8.39) | (8.49) |
| | Correlation with MBE | .19 | .50 | .63 | .55 | .56 |
| | N | 128 | 589 | 2187 | 4725 | 4039 |

Table AD1.3
MBE Scaled Score Means and Standard Deviations
at Particular Ranges of LSAT Scores
New York State Board of Law Examiners Sample
Domestic-Educated Candidates with Valid LSAT Scores

| | February 2016 | | | February 2017 | | | July 2015 | | | July 2016 | | | July 2017 | | |
|------------|---------------|---------|-----|---------------|---------|-----|-----------|---------|-----|-----------|---------|-----|-----------|---------|-----|
| | MBE | | | MBE | | | MBE | | | MBE | | | MBE | | |
| | Mean | (SD) | N | Mean | (SD) | N | Mean | (SD) | N | Mean | (SD) | N | Mean | (SD) | N |
| LSAT | | | | | | | | | | | | | | | |
| Below 144 | 122.80 | (10.42) | 63 | 125.67 | (10.98) | 113 | 122.70 | (13.37) | 86 | 123.42 | (14.09) | 133 | 125.30 | (11.80) | 151 |
| 144 to 147 | 124.33 | (9.38) | 94 | 128.93 | (11.60) | 210 | 124.68 | (11.47) | 150 | 130.52 | (12.44) | 305 | 130.63 | (12.38) | 259 |
| 148 to 151 | 125.28 | (10.54) | 167 | 131.02 | (12.49) | 330 | 128.37 | (13.18) | 265 | 132.88 | (14.27) | 630 | 134.85 | (13.87) | 457 |
| 152 to 155 | 128.27 | (10.78) | 169 | 131.55 | (12.11) | 328 | 134.54 | (13.14) | 382 | 137.73 | (14.28) | 841 | 140.19 | (14.69) | 580 |
| 156 to 159 | 129.05 | (10.37) | 104 | 134.27 | (13.55) | 215 | 138.56 | (14.23) | 360 | 142.38 | (14.16) | 790 | 144.28 | (13.89) | 625 |
| 160 to 163 | 132.13 | (13.05) | 57 | 138.59 | (13.47) | 148 | 143.94 | (13.06) | 338 | 148.04 | (13.40) | 730 | 150.12 | (13.36) | 678 |
| 164 to 167 | 134.48 | (9.96) | 32 | 146.77 | (13.75) | 108 | 151.41 | (12.83) | 360 | 151.50 | (12.61) | 802 | 154.66 | (12.56) | 765 |
| 168 to 171 | 136.28 | (13.02) | 21 | 144.97 | (16.03) | 59 | 153.36 | (12.33) | 294 | 155.19 | (12.43) | 665 | 157.40 | (11.91) | 617 |
| Above 171 | 133.36 | (19.39) | 9 | 150.96 | (14.97) | 38 | 158.76 | (11.15) | 250 | 159.49 | (10.92) | 426 | 160.54 | (11.37) | 465 |

Figure AD1.1
Boxplots of MBE Scales Scores at Particular Ranges of LSAT Scores
New York State Board of Law Examiners Sample
Domestic-Educated Candidates with Valid LSAT Scores

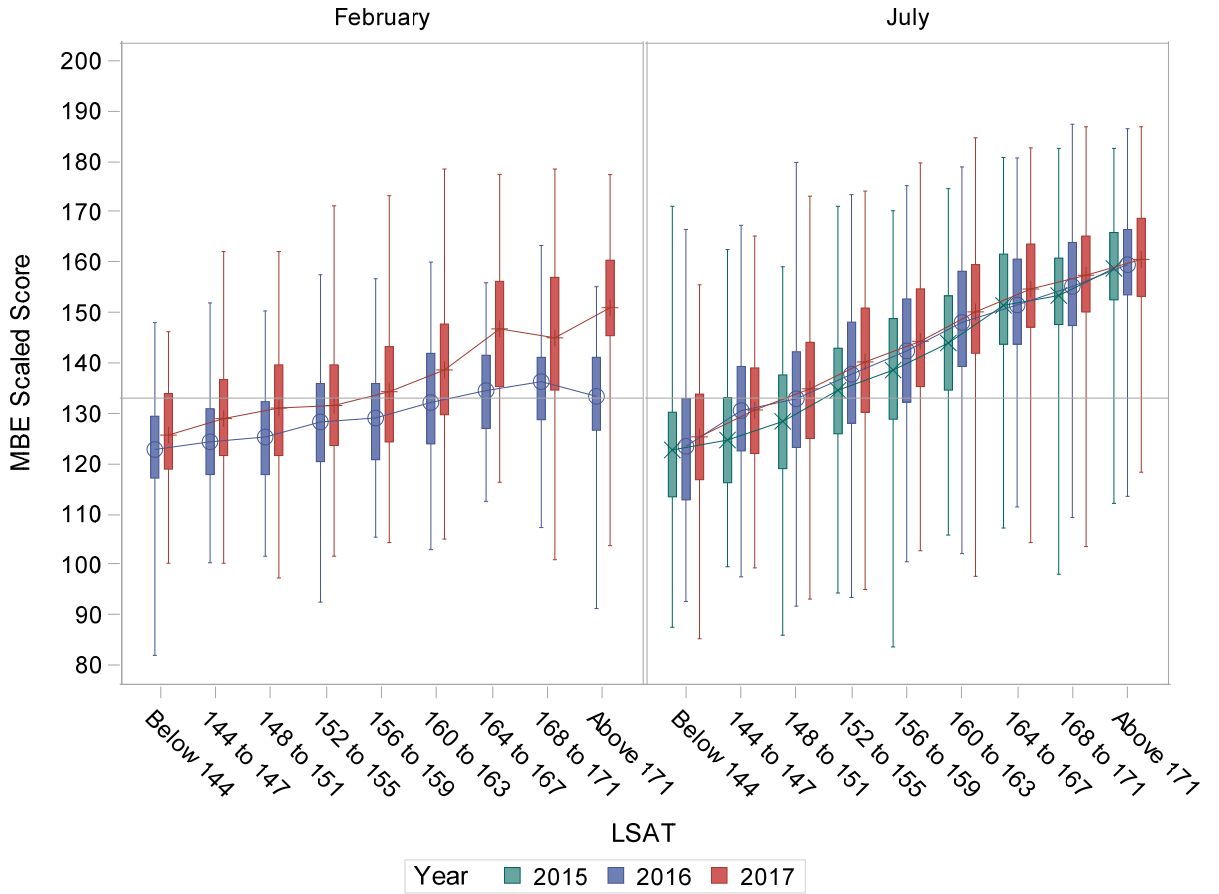


Figure AD1.2
Mean MBE Scaled Scores at Particular Ranges of LSAT Scores
New York State Board of Law Examiners Sample
Domestic-Educated Candidates with Valid LSAT Scores

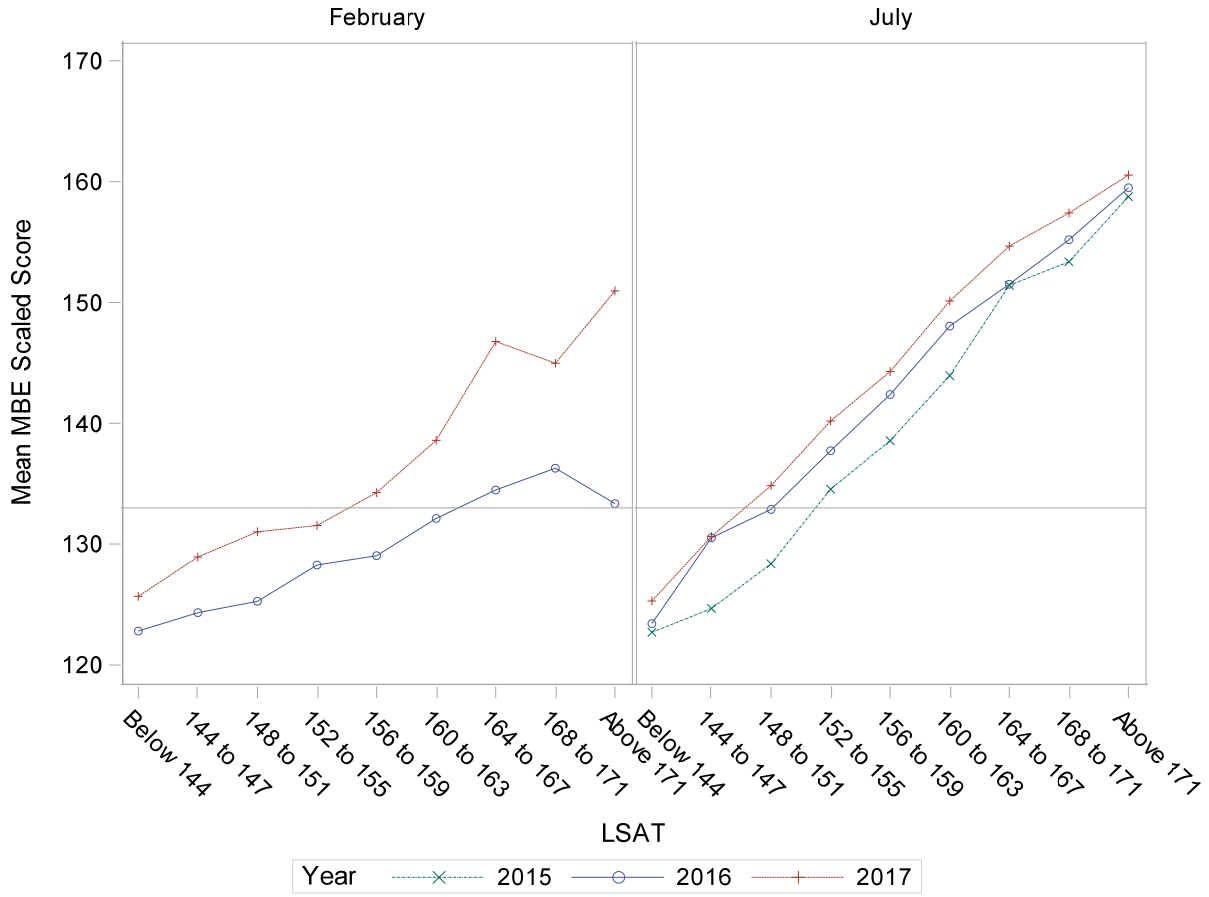


Table AD1.4
Percentage with MBE Greater than or Equal to 133 at Particular Ranges of LSAT Scores
New York State Board of Law Examiners Sample
Domestic-Educated Candidates with Valid LSAT Scores

| | February 2016 | | February 2017 | | July 2015 | | July 2016 | | July 2017 | |
|------------|------------------|-----|------------------|-----|-----------|-----|-----------|-----|-----------|-----|
| | Mean | N | Mean | N | Mean | N | Mean | N | Mean | N |
| LSAT | | | | | | | | | | |
| Below 144 | 12.7% | 63 | 30.1% | 113 | 19.8% | 86 | 24.1% | 133 | 28.5% | 151 |
| 144 to 147 | 17.0% | 94 | 37.1% | 210 | 26.0% | 150 | 37.7% | 305 | 43.6% | 259 |
| 148 to 151 | 23.4% | 167 | 41.8% | 330 | 34.3% | 265 | 47.3% | 630 | 56.9% | 457 |
| 152 to 155 | 36.7% | 169 | 43.0% | 328 | 55.5% | 382 | 62.2% | 841 | 69.5% | 580 |
| 156 to 159 | 39.4% | 104 | 52.1% | 215 | 66.7% | 360 | 73.5% | 790 | 79.8% | 625 |
| 160 to 163 | 49.1% | 57 | 64.2% | 148 | 77.8% | 338 | 86.3% | 730 | 89.2% | 678 |
| 164 to 167 | 68.8% | 32 | 85.2% | 108 | 91.7% | 360 | 91.6% | 802 | 94.4% | 765 |
| 168 to 171 | 66.7% | 21 | 78.0% | 59 | 93.9% | 294 | 95.2% | 665 | 95.8% | 617 |
| Above 171 | 55.6% | 9 | 86.8% | 38 | 97.6% | 250 | 98.1% | 426 | 98.7% | 465 |

Figure AD1.3
Percentage with MBE Greater than or Equal to 133 at Particular Ranges of LSAT Scores
New York State Board of Law Examiners Sample
Domestic-Educated Candidates with Valid LSAT Scores

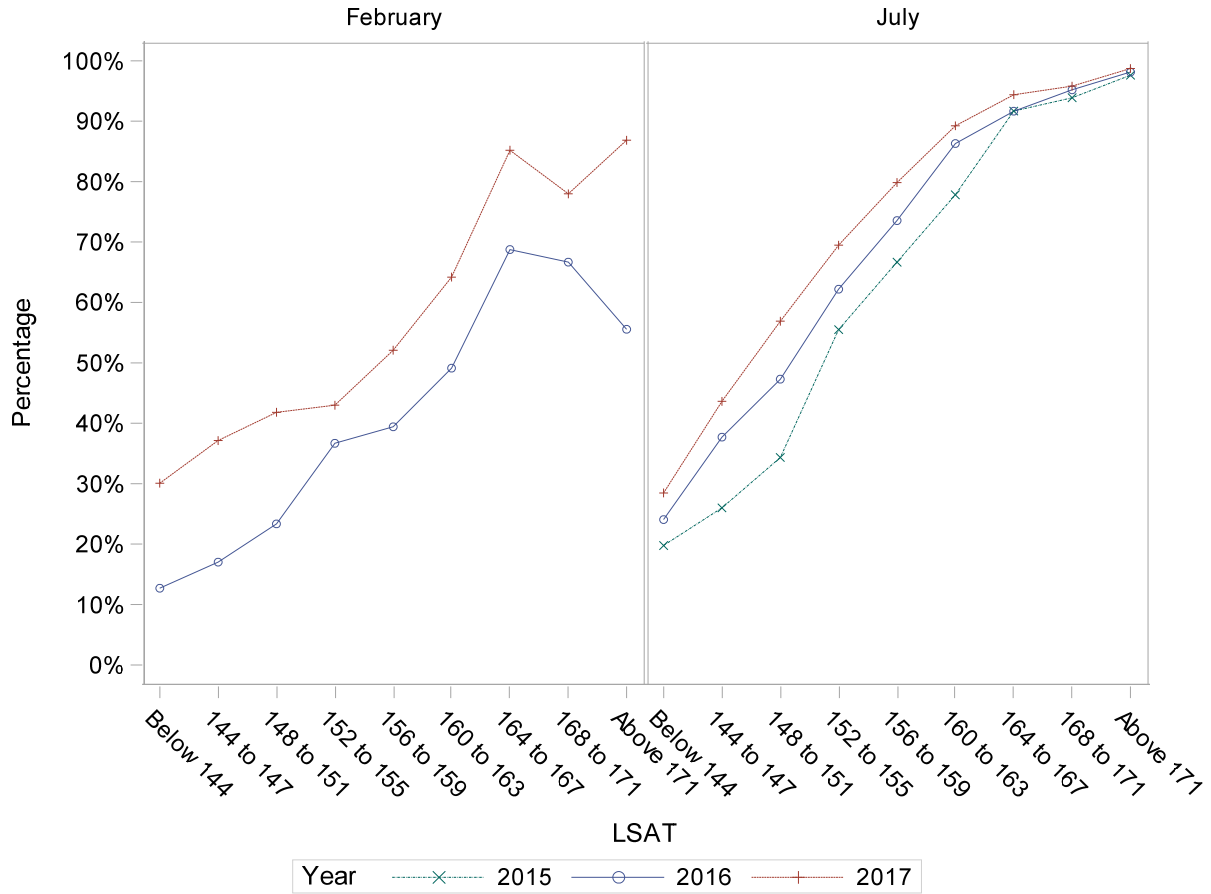


Table AD1.5
MBE Scaled Score Means and Standard Deviations
at Particular Ranges of LSAT Scores
First-Time Taker New York State Board of Law Examiners Sample
Domestic-Educated Candidates with Valid LSAT Scores

| | February 2016 | | | February 2017 | | | July 2015 | | | July 2016 | | | July 2017 | | |
|------------|---------------|---------|----|---------------|---------|-----|-----------|---------|-----|-----------|---------|-----|-----------|---------|-----|
| | MBE | | | MBE | | | MBE | | | MBE | | | MBE | | |
| | Mean | (SD) | N | Mean | (SD) | N | Mean | (SD) | N | Mean | (SD) | N | Mean | (SD) | N |
| LSAT | | | | | | | | | | | | | | | |
| Below 144 | 117.06 | (8.96) | 7 | 126.21 | (12.60) | 29 | 124.03 | (14.02) | 51 | 124.90 | (14.99) | 75 | 127.63 | (11.65) | 82 |
| 144 to 147 | 124.08 | (7.05) | 18 | 130.47 | (13.75) | 55 | 125.03 | (11.95) | 106 | 132.65 | (12.39) | 226 | 132.27 | (13.06) | 165 |
| 148 to 151 | 121.05 | (9.62) | 37 | 135.10 | (13.41) | 104 | 130.22 | (13.55) | 202 | 135.07 | (14.05) | 487 | 138.06 | (13.82) | 320 |
| 152 to 155 | 123.81 | (11.89) | 29 | 137.67 | (13.76) | 103 | 136.26 | (13.03) | 316 | 139.76 | (13.93) | 710 | 143.05 | (14.16) | 458 |
| 156 to 159 | 126.63 | (10.44) | 14 | 139.58 | (15.45) | 75 | 140.28 | (13.71) | 321 | 144.21 | (13.37) | 702 | 145.80 | (13.18) | 566 |
| 160 to 163 | 119.53 | (12.91) | 9 | 143.74 | (13.60) | 81 | 144.93 | (12.90) | 310 | 148.98 | (13.14) | 683 | 151.24 | (12.60) | 642 |
| 164 to 167 | 126.16 | (6.36) | 5 | 150.52 | (13.20) | 78 | 151.94 | (12.48) | 350 | 152.29 | (11.90) | 774 | 155.19 | (12.24) | 742 |
| 168 to 171 | 137.32 | (9.28) | 6 | 152.42 | (12.87) | 37 | 154.24 | (11.18) | 284 | 155.69 | (11.99) | 649 | 157.97 | (11.39) | 602 |
| Above 171 | 119.13 | (25.05) | 3 | 157.26 | (9.79) | 27 | 159.06 | (10.88) | 247 | 159.85 | (10.56) | 419 | 160.72 | (11.16) | 462 |

Figure AD1.4
Boxplots of MBE Scales Scores at Particular Ranges of LSAT Scores
First-Time Taker New York State Board of Law Examiners Sample
Domestic-Educated Candidates with Valid LSAT Scores

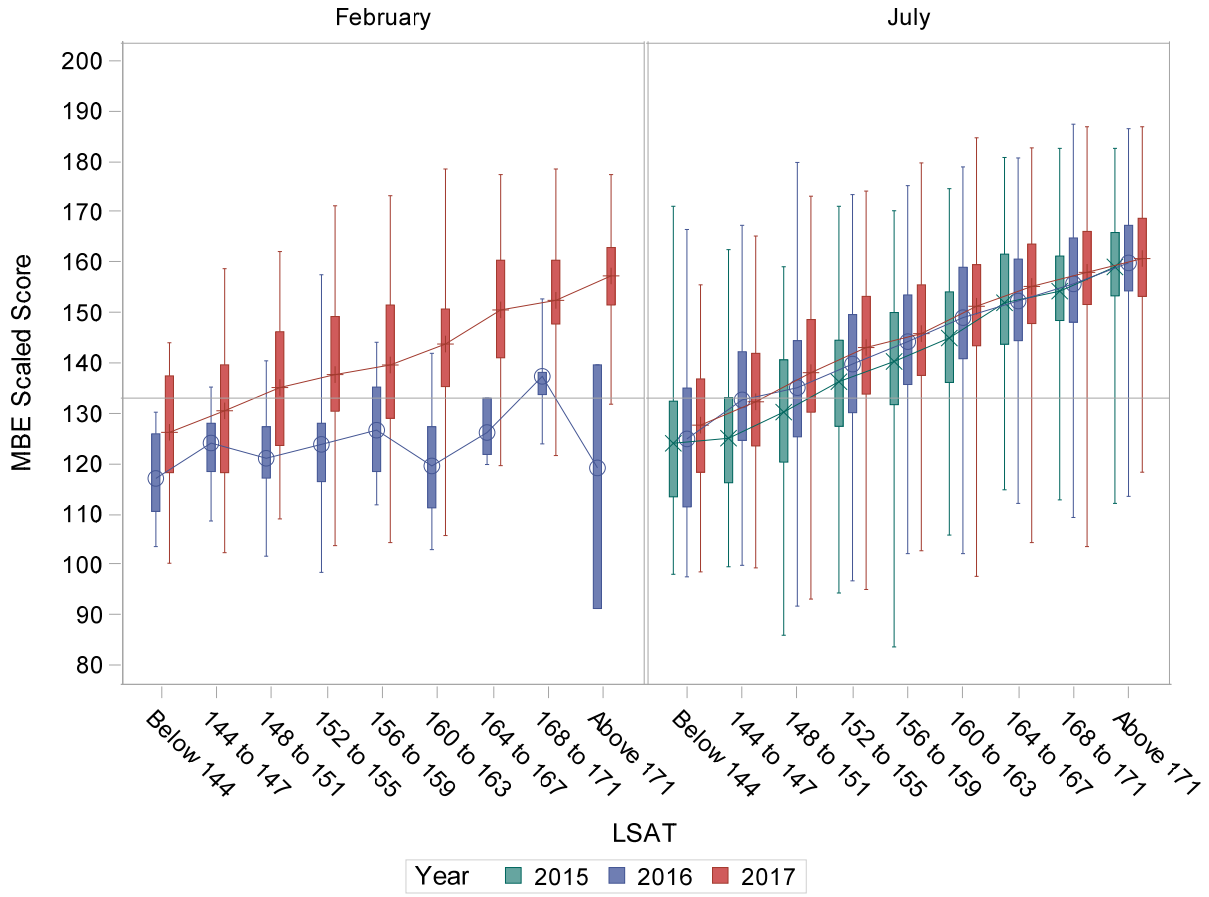


Figure AD1.5
Mean MBE Scaled Scores at Particular Ranges of LSAT Scores
First-Time Taker New York State Board of Law Examiners Sample
Domestic-Educated Candidates with Valid LSAT Scores

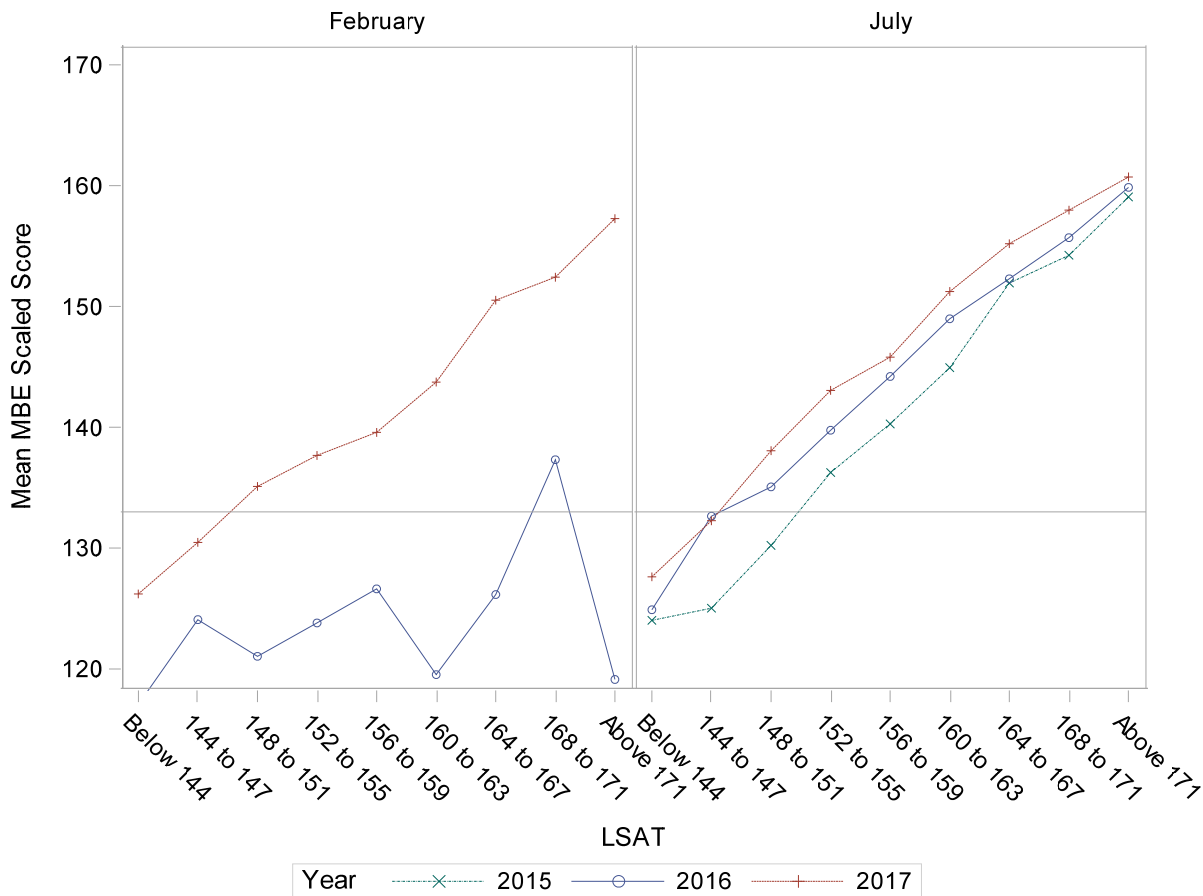
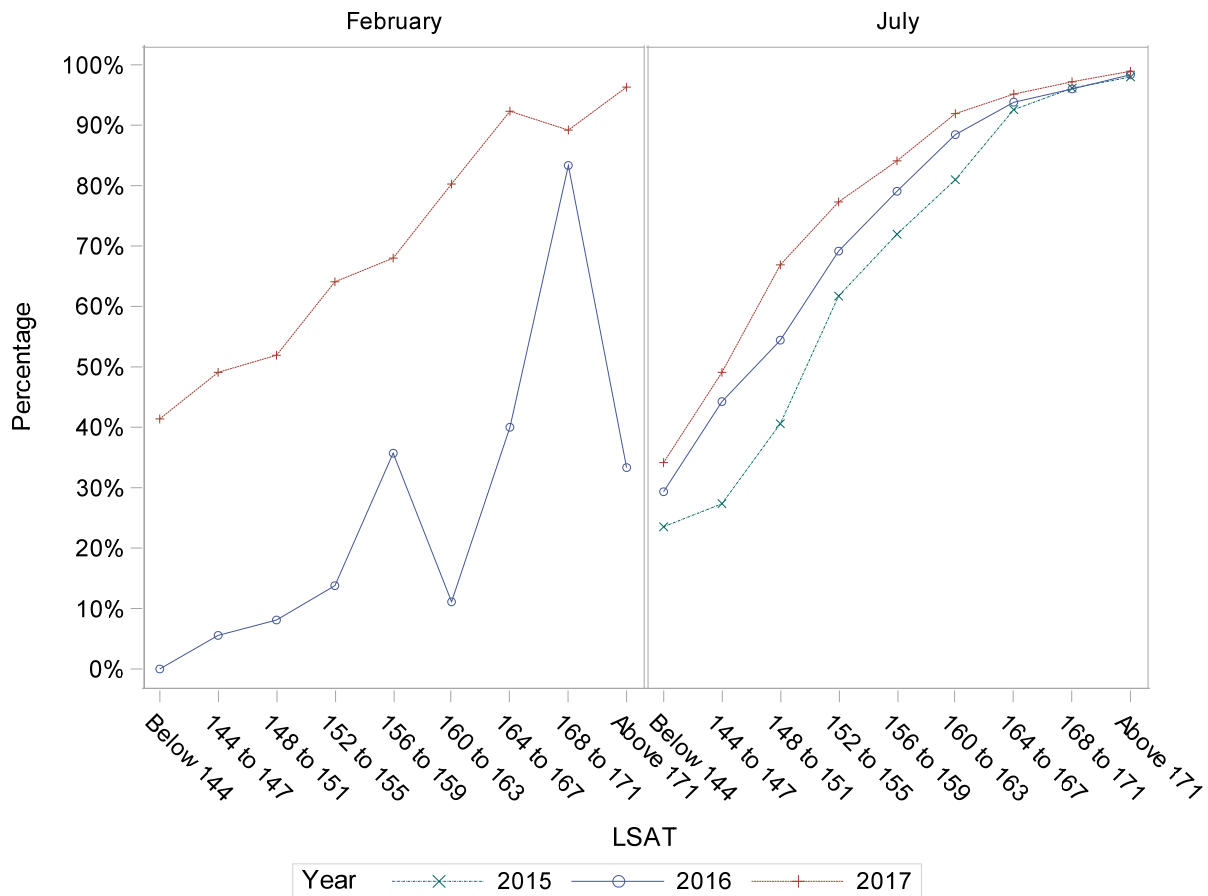


Table AD1.6
Percentage with MBE Greater than or Equal to 133 at Particular Ranges of LSAT Scores
First-Time Taker New York State Board of Law Examiners Sample
Domestic-Educated Candidates with Valid LSAT Scores

| | February 2016 | | February 2017 | | July 2015 | | July 2016 | | July 2017 | |
|------------|------------------|----|------------------|-----|-----------|-----|-----------|-----|-----------|-----|
| | Mean | N | Mean | N | Mean | N | Mean | N | Mean | N |
| LSAT | | | | | | | | | | |
| Below 144 | 0.0% | 7 | 41.4% | 29 | 23.5% | 51 | 29.3% | 75 | 34.1% | 82 |
| 144 to 147 | 5.6% | 18 | 49.1% | 55 | 27.4% | 106 | 44.2% | 226 | 49.1% | 165 |
| 148 to 151 | 8.1% | 37 | 51.9% | 104 | 40.6% | 202 | 54.4% | 487 | 66.9% | 320 |
| 152 to 155 | 13.8% | 29 | 64.1% | 103 | 61.7% | 316 | 69.2% | 710 | 77.3% | 458 |
| 156 to 159 | 35.7% | 14 | 68.0% | 75 | 72.0% | 321 | 79.1% | 702 | 84.1% | 566 |
| 160 to 163 | 11.1% | 9 | 80.2% | 81 | 81.0% | 310 | 88.4% | 683 | 91.9% | 642 |
| 164 to 167 | 40.0% | 5 | 92.3% | 78 | 92.6% | 350 | 93.8% | 774 | 95.1% | 742 |
| 168 to 171 | 83.3% | 6 | 89.2% | 37 | 96.1% | 284 | 96.0% | 649 | 97.2% | 602 |
| Above 171 | 33.3% | 3 | 96.3% | 27 | 98.0% | 247 | 98.3% | 419 | 98.9% | 462 |

Figure AD1.6
Percentage with MBE Greater than or Equal to 133 at Particular Ranges of LSAT Scores
First-Time Taker New York State Board of Law Examiners Sample
Domestic-Educated Candidates with Valid LSAT Scores



Addendum 2

New York State Board of Law Examiners Sample: Candidates with Valid UGPAs UGPA Analysis

This addendum includes all valid undergraduate grade-point averages (UGPAs)³ for domestic-educated candidates. The results below provide a view of domestic-educated candidate UGPA performance for all available UGPAs scores from all available law schools in the New York State Board of Law Examiners sample (analogous tables and figures for the school-based sample are contained in section 3.2 and 3.5 of the primary report). Figures include a horizontal line indicating an Multistate Bar Examination (MBE) score of 133, which analogous to the 266 passing score in New York but rescaled to an MBE score. This horizontal line can be used to gauge where candidate MBE scores tend to fall relative to an MBE score of 133 at different levels of UGPA.

Patterns in performance comparing UGPAs against MBE scores were similar to patterns in performance comparing UGPAs against bar exam scores (and pass rates) in the main report, particularly for July exams.⁴ As UGPAs increased, MBE scores increased.⁵ Also, MBE scores tended to be higher for candidates across years, such that 2017 MBE scores at a particular UGPA range tended to be higher than 2016, which was higher than 2015. These patterns are consistent with results in the main report, where such patterns are discussed in more detail. That differences remain in MBE scores across years after accounting for UGPA indicates that UGPA by itself does not entirely explain improvements in MBE performance across years (i.e., before and after UBE adoption).

³ UGPAs that were not on a 4-point scaled were excluded from this analysis along with any missing UGPAs.

⁴ Differences across February 2016 and February 2017 were larger than those observed in the main report, likely due to issues with the February sample that were described throughout the main report.

⁵ There were instances where the number of candidates included in the groupings of UGPAs was small and led to an observed decrease in means. Few candidates in the groups used to calculate means was likely to lead to unstable estimates and says more about the specific, few, candidates included in the group than about a group of candidates with a particular range of UGPAs. Caution is warranted when interpreting the groups with small sample sizes.

Table AD2.1
UGPA Means and Standard Deviations
New York State Board of Law Examiners Sample
Domestic-Educated Candidates with Valid UGPA Scores

| | | February 2016 | February 2017 | July 2015 | July 2016 | July 2017 |
|---------------------|-------------------------|------------------|------------------|-----------|-----------|-----------|
| UGPA (SEM < 0.1) | Mean | 3.17 | 3.23 | 3.41 | 3.42 | 3.47 |
| | (SD) | (0.44) | (0.44) | (0.41) | (0.41) | (0.39) |
| | Correlation with MBE | .14 | .28 | .47 | .39 | .45 |
| | N | 700 | 1501 | 2421 | 5172 | 4432 |

Table AD2.2
UGPA Means and Standard Deviations
New York State Board of Law Examiners Sample
Domestic-Educated Candidates with Valid UGPA Scores

| | | February 2016 | February 2017 | July 2015 | July 2016 | July 2017 |
|---------------------|-------------------------|------------------|------------------|-----------|-----------|-----------|
| UGPA (SEM < 0.1) | Mean | 3.14 | 3.33 | 3.46 | 3.46 | 3.52 |
| | (SD) | (0.42) | (0.43) | (0.39) | (0.38) | (0.36) |
| | Correlation with MBE | .07 | .38 | .44 | .35 | .40 |
| | N | 122 | 574 | 2122 | 4586 | 3895 |

Table AD2.3
MBE Scaled Score Means and Standard Deviations at Particular Ranges of UGPAs
New York State Board of Law Examiners Sample
Domestic-Educated Candidates with Valid UGPA Scores

| | February 2016 | | | February 2017 | | | July 2015 | | | July 2016 | | | July 2017 | | |
|--------------|---------------|---------|-----|---------------|---------|-----|-----------|---------|-----|-----------|---------|------|-----------|---------|------|
| | MBE | | | MBE | | | MBE | | | MBE | | | MBE | | |
| | Mean | (SD) | N | Mean | (SD) | N | Mean | (SD) | N | Mean | (SD) | N | Mean | (SD) | N |
| UGPA | | | | | | | | | | | | | | | |
| Below 2.50 | 125.85 | (11.27) | 59 | 128.71 | (11.25) | 103 | 125.37 | (14.26) | 85 | 132.47 | (13.82) | 175 | 132.25 | (14.12) | 119 |
| 2.50 to 2.69 | 123.94 | (10.77) | 57 | 130.04 | (12.80) | 91 | 126.92 | (13.05) | 81 | 133.52 | (15.65) | 148 | 136.99 | (16.25) | 107 |
| 2.70 to 2.89 | 127.14 | (11.52) | 68 | 128.77 | (12.40) | 124 | 131.08 | (14.66) | 129 | 135.30 | (14.91) | 240 | 134.33 | (14.52) | 185 |
| 2.90 to 3.09 | 125.56 | (10.87) | 100 | 130.86 | (13.31) | 207 | 132.77 | (15.91) | 208 | 137.97 | (15.11) | 464 | 137.88 | (15.46) | 331 |
| 3.10 to 3.29 | 128.02 | (11.14) | 116 | 131.63 | (12.73) | 249 | 135.56 | (15.20) | 289 | 138.81 | (15.16) | 658 | 140.51 | (15.89) | 475 |
| 3.30 to 3.49 | 127.37 | (10.88) | 113 | 134.28 | (13.53) | 263 | 140.40 | (14.66) | 410 | 143.29 | (15.67) | 891 | 144.43 | (15.50) | 721 |
| 3.50 to 3.69 | 130.04 | (10.76) | 108 | 136.46 | (13.18) | 236 | 144.10 | (15.49) | 520 | 146.39 | (15.33) | 1087 | 148.97 | (15.06) | 988 |
| 3.70 to 3.89 | 130.80 | (12.59) | 57 | 142.14 | (16.66) | 176 | 150.85 | (14.43) | 503 | 151.34 | (14.22) | 1060 | 154.48 | (13.15) | 1037 |
| Above 3.89 | 128.01 | (12.06) | 22 | 142.62 | (16.34) | 52 | 153.39 | (15.83) | 196 | 155.00 | (14.06) | 449 | 158.75 | (12.58) | 469 |

Figure AD2.1
Boxplots of MBE Scales Scores at Particular Ranges of UGPAs
New York State Board of Law Examiners Sample
Domestic-Educated Candidates with Valid UGPAs

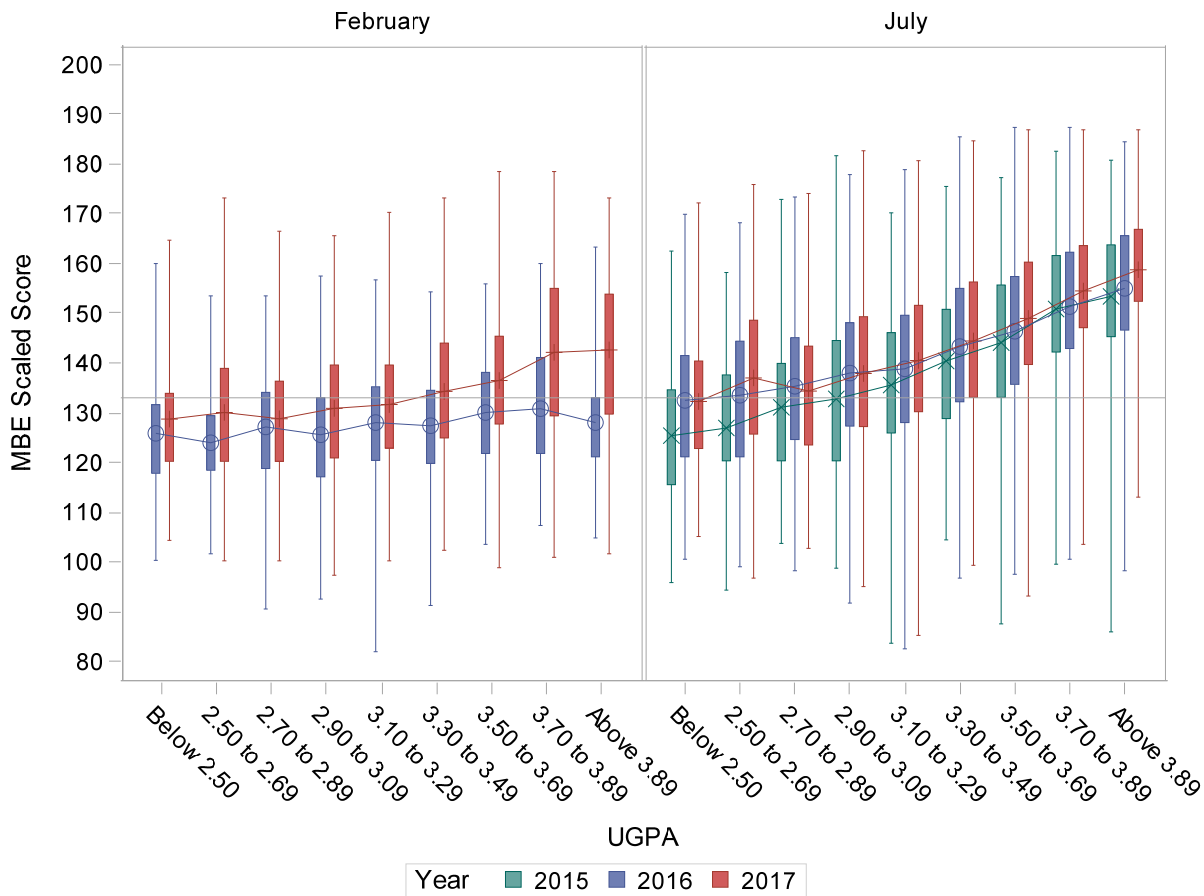


Figure AD2.2
Mean MBE Scaled Scores at Particular Ranges of UGPAs
New York State Board of Law Examiners Sample
Domestic-Educated Candidates with Valid UGPAs

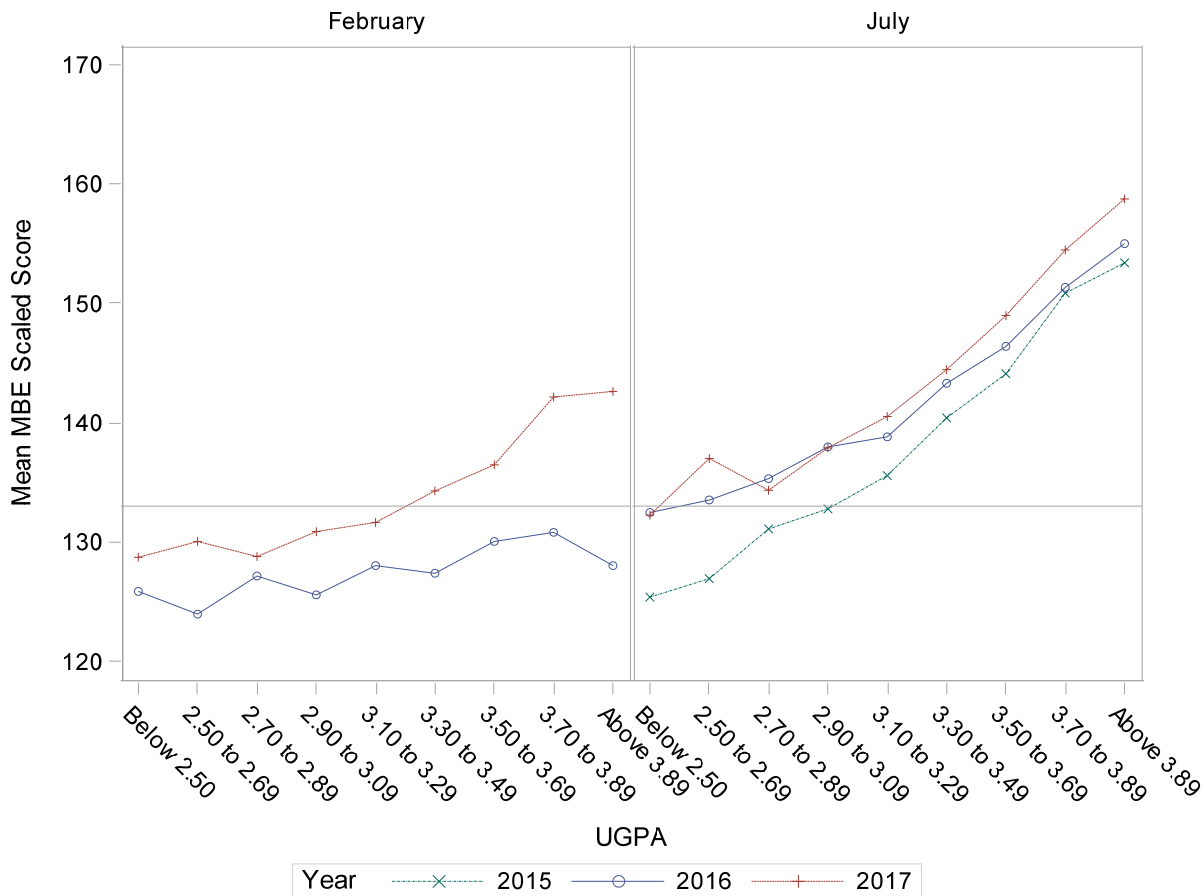


Table AD2.4
Percentage with MBE Greater than or Equal to 133 at Particular Ranges of UGPAs
New York State Board of Law Examiners Sample
Domestic-Educated Candidates with Valid UGPAs

| | February 2016 | | February 2017 | | July 2015 | | July 2016 | | July 2017 | |
|--------------|------------------|-----|------------------|-----|-----------|-----|-----------|------|-----------|------|
| | Mean | N | Mean | N | Mean | N | Mean | N | Mean | N |
| UGPA | | | | | | | | | | |
| Below 2.50 | 23.7% | 59 | 28.2% | 103 | 29.4% | 85 | 45.1% | 175 | 49.6% | 119 |
| 2.50 to 2.69 | 19.3% | 57 | 41.8% | 91 | 33.3% | 81 | 49.3% | 148 | 61.7% | 107 |
| 2.70 to 2.89 | 29.4% | 68 | 32.3% | 124 | 41.1% | 129 | 53.3% | 240 | 54.1% | 185 |
| 2.90 to 3.09 | 26.0% | 100 | 44.4% | 207 | 47.1% | 208 | 61.4% | 464 | 63.7% | 331 |
| 3.10 to 3.29 | 32.8% | 116 | 45.4% | 249 | 58.1% | 289 | 63.7% | 658 | 69.7% | 475 |
| 3.30 to 3.49 | 31.9% | 113 | 53.6% | 263 | 69.3% | 410 | 73.8% | 891 | 75.6% | 721 |
| 3.50 to 3.69 | 44.4% | 108 | 57.6% | 236 | 75.8% | 520 | 79.9% | 1087 | 84.9% | 988 |
| 3.70 to 3.89 | 42.1% | 57 | 71.0% | 176 | 87.1% | 503 | 87.9% | 1060 | 93.1% | 1037 |
| Above 3.89 | 31.8% | 22 | 69.2% | 52 | 88.3% | 196 | 92.9% | 449 | 95.5% | 469 |

Figure AD2.3
Percentage with MBE Greater than or Equal to 133 at Particular Ranges of UGPAs
New York State Board of Law Examiners Sample
Domestic-Educated Candidates with Valid UGPAs

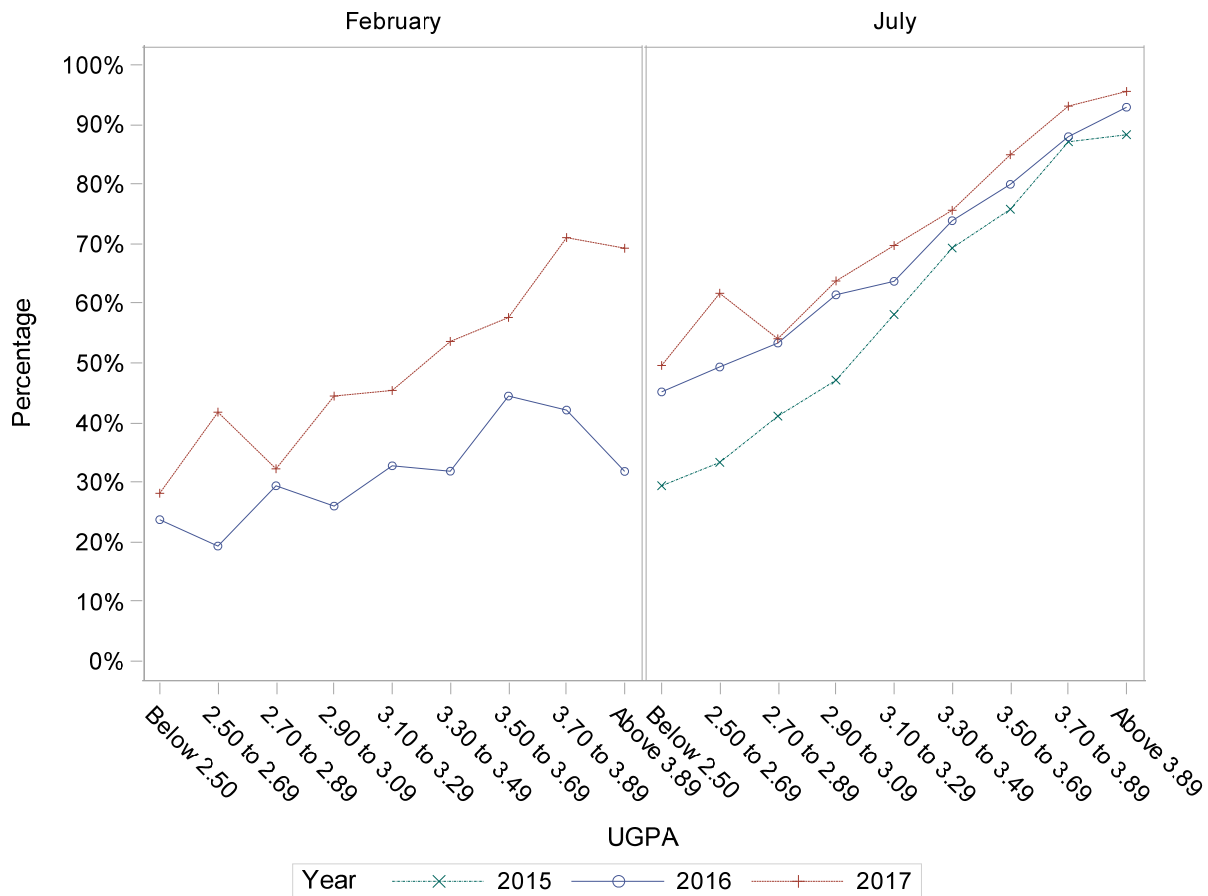


Table AD2.5
MBE Scaled Score Means and Standard Deviations at Particular Ranges of UGPAs
First-Time Taker New York State Board of Law Examiners Sample
Domestic-Educated Candidates with Valid UGPAs

| | February 2016 | | | February 2017 | | | July 2015 | | | July 2016 | | | July 2017 | | |
|--------------|---------------|---------|----|---------------|---------|-----|-----------|---------|-----|-----------|---------|------|-----------|---------|-----|
| | MBE | | | MBE | | | MBE | | | MBE | | | MBE | | |
| | Mean | (SD) | N | Mean | (SD) | N | Mean | (SD) | N | Mean | (SD) | N | Mean | (SD) | N |
| UGPA | | | | | | | | | | | | | | | |
| Below 2.50 | 124.01 | (9.00) | 8 | 128.80 | (12.91) | 26 | 129.15 | (15.03) | 48 | 135.53 | (14.00) | 119 | 136.27 | (15.36) | 67 |
| 2.50 to 2.69 | 121.28 | (9.90) | 12 | 134.09 | (13.85) | 28 | 129.66 | (13.54) | 58 | 138.67 | (15.74) | 93 | 143.24 | (14.93) | 69 |
| 2.70 to 2.89 | 123.36 | (13.07) | 18 | 133.80 | (14.99) | 33 | 133.55 | (15.41) | 97 | 138.66 | (14.71) | 174 | 138.14 | (14.57) | 128 |
| 2.90 to 3.09 | 123.04 | (12.78) | 18 | 134.97 | (15.49) | 71 | 135.17 | (16.03) | 166 | 140.62 | (14.55) | 374 | 141.28 | (14.91) | 253 |
| 3.10 to 3.29 | 122.64 | (8.21) | 23 | 136.26 | (15.69) | 87 | 137.47 | (14.83) | 242 | 140.61 | (14.69) | 574 | 143.50 | (15.28) | 377 |
| 3.30 to 3.49 | 122.96 | (13.91) | 18 | 141.18 | (13.83) | 102 | 142.38 | (14.24) | 356 | 145.27 | (14.83) | 793 | 146.74 | (14.78) | 629 |
| 3.50 to 3.69 | 121.51 | (7.26) | 12 | 143.65 | (13.18) | 94 | 145.38 | (14.84) | 481 | 147.83 | (14.55) | 1011 | 150.51 | (14.14) | 920 |
| 3.70 to 3.89 | 124.52 | (10.04) | 6 | 149.97 | (15.02) | 100 | 151.74 | (13.79) | 485 | 152.27 | (13.55) | 1019 | 155.31 | (12.45) | 997 |
| Above 3.89 | 129.63 | (11.63) | 7 | 149.81 | (13.55) | 33 | 154.56 | (14.76) | 189 | 156.09 | (13.16) | 429 | 159.65 | (11.56) | 455 |

Figure AD2.4
Boxplots of MBE Scales Scores at Particular Ranges of UGPAs
First-Time Taker New York State Board of Law Examiners Sample
Domestic-Educated Candidates with Valid UGPAs

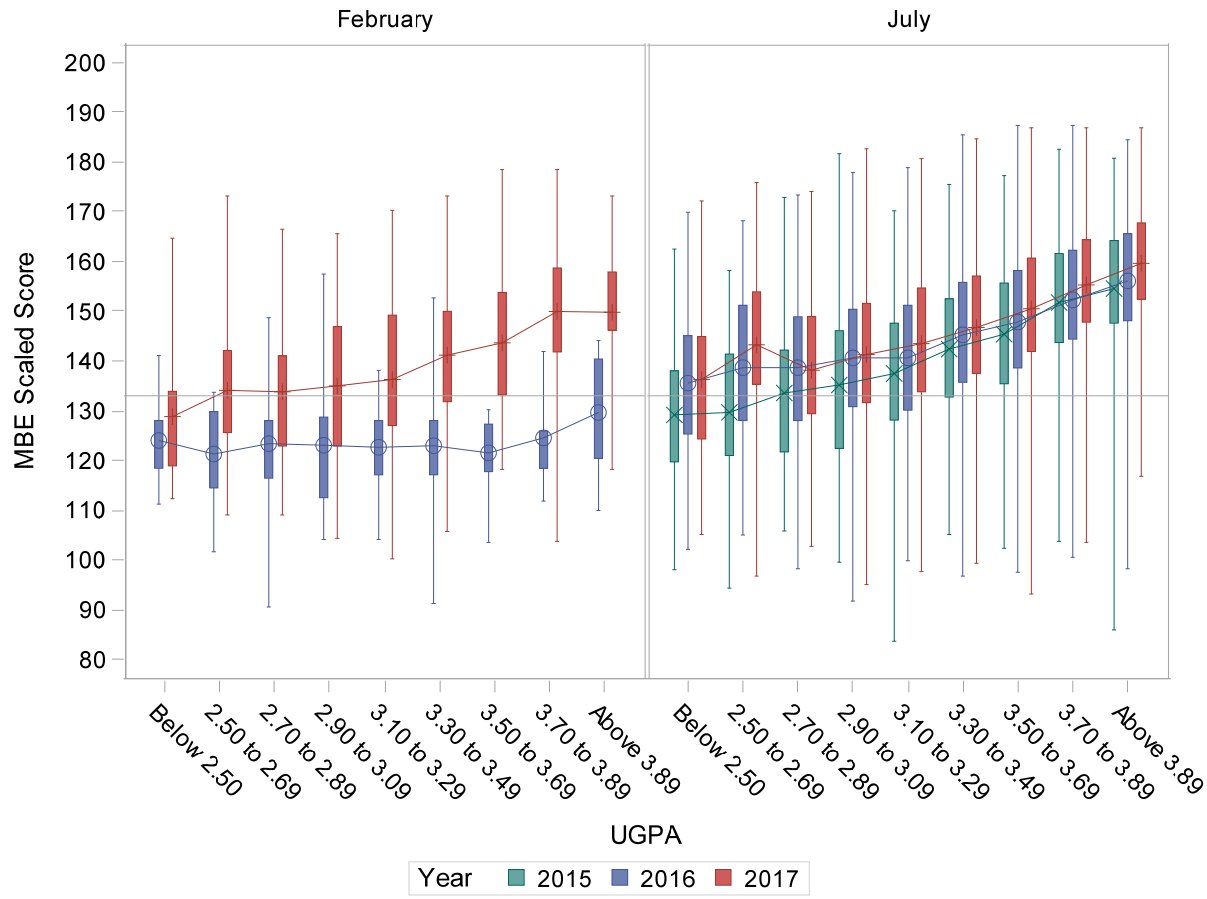


Figure AD2.5
Mean MBE Scaled Scores at Particular Ranges of UGPAs
First-Time Taker New York State Board of Law Examiners Sample
Domestic-Educated Candidates with Valid UGPAs

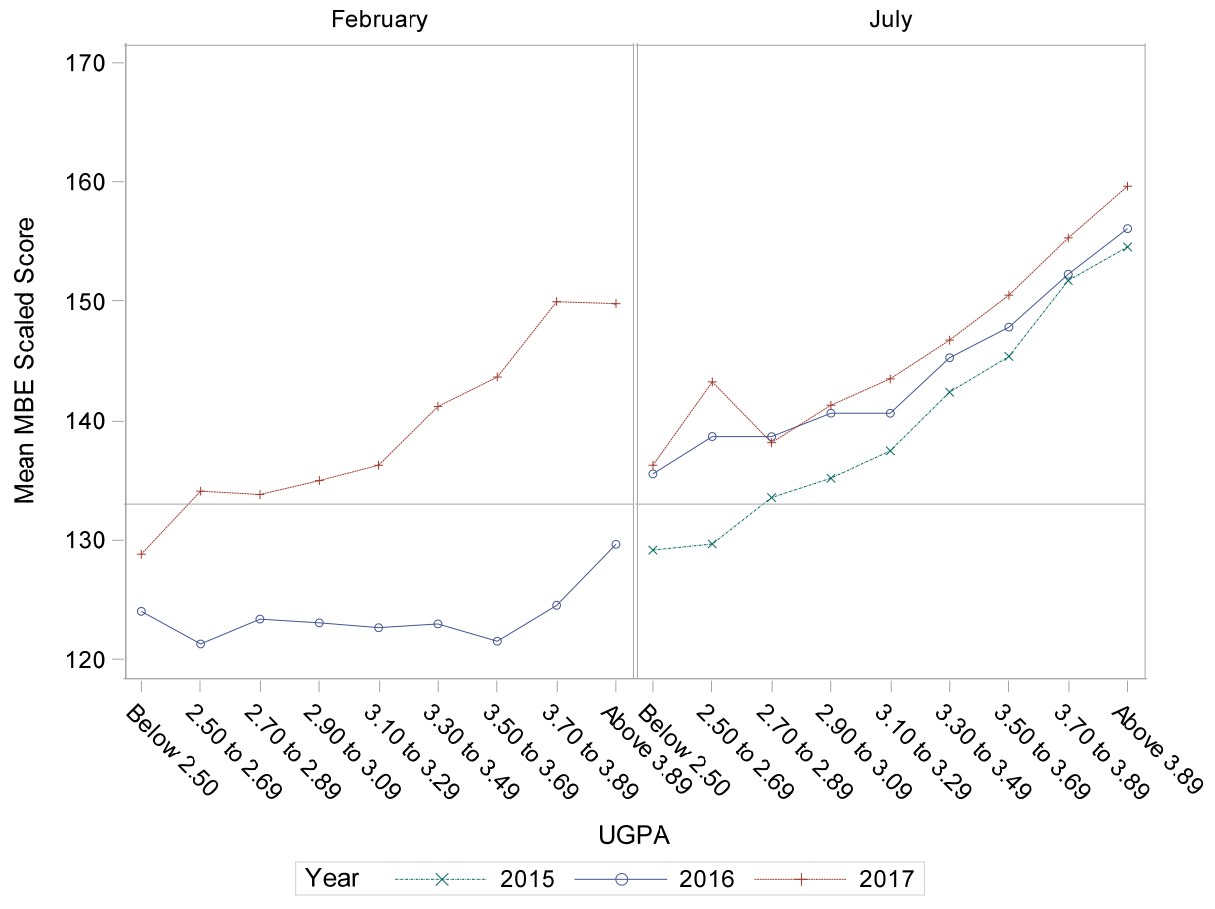


Table AD2.6
Percentage with MBE Greater than or Equal to 133 at Particular Ranges of UGPAs
First-Time Taker New York State Board of Law Examiners Sample
Domestic-Educated Candidates with Valid UGPAs

| | February 2016 | | February 2017 | | July 2015 | | July 2016 | | July 2017 | |
|--------------|------------------|----|------------------|-----|-----------|-----|-----------|------|-----------|-----|
| | Mean | N | Mean | N | Mean | N | Mean | N | Mean | N |
| UGPA | | | | | | | | | | |
| Below 2.50 | 12.5% | 8 | 30.8% | 26 | 39.6% | 48 | 57.1% | 119 | 59.7% | 67 |
| 2.50 to 2.69 | 8.3% | 12 | 57.1% | 28 | 44.8% | 58 | 63.4% | 93 | 76.8% | 69 |
| 2.70 to 2.89 | 22.2% | 18 | 51.5% | 33 | 51.5% | 97 | 62.6% | 174 | 66.4% | 128 |
| 2.90 to 3.09 | 16.7% | 18 | 57.7% | 71 | 53.6% | 166 | 69.5% | 374 | 73.9% | 253 |
| 3.10 to 3.29 | 8.7% | 23 | 59.8% | 87 | 62.4% | 242 | 68.6% | 574 | 76.9% | 377 |
| 3.30 to 3.49 | 22.2% | 18 | 72.5% | 102 | 75.0% | 356 | 79.2% | 793 | 81.6% | 629 |
| 3.50 to 3.69 | 0.0% | 12 | 77.7% | 94 | 79.0% | 481 | 84.1% | 1011 | 88.5% | 920 |
| 3.70 to 3.89 | 16.7% | 6 | 88.0% | 100 | 89.5% | 485 | 90.0% | 1019 | 94.7% | 997 |
| Above 3.89 | 42.9% | 7 | 87.9% | 33 | 91.0% | 189 | 95.6% | 429 | 97.6% | 455 |

Figure AD2.6
Percentage with MBE Greater than or Equal to 133 at Particular Ranges of UGPAs
First-Time Taker New York State Board of Law Examiners Sample
Domestic-Educated Candidates with Valid UGPAs

